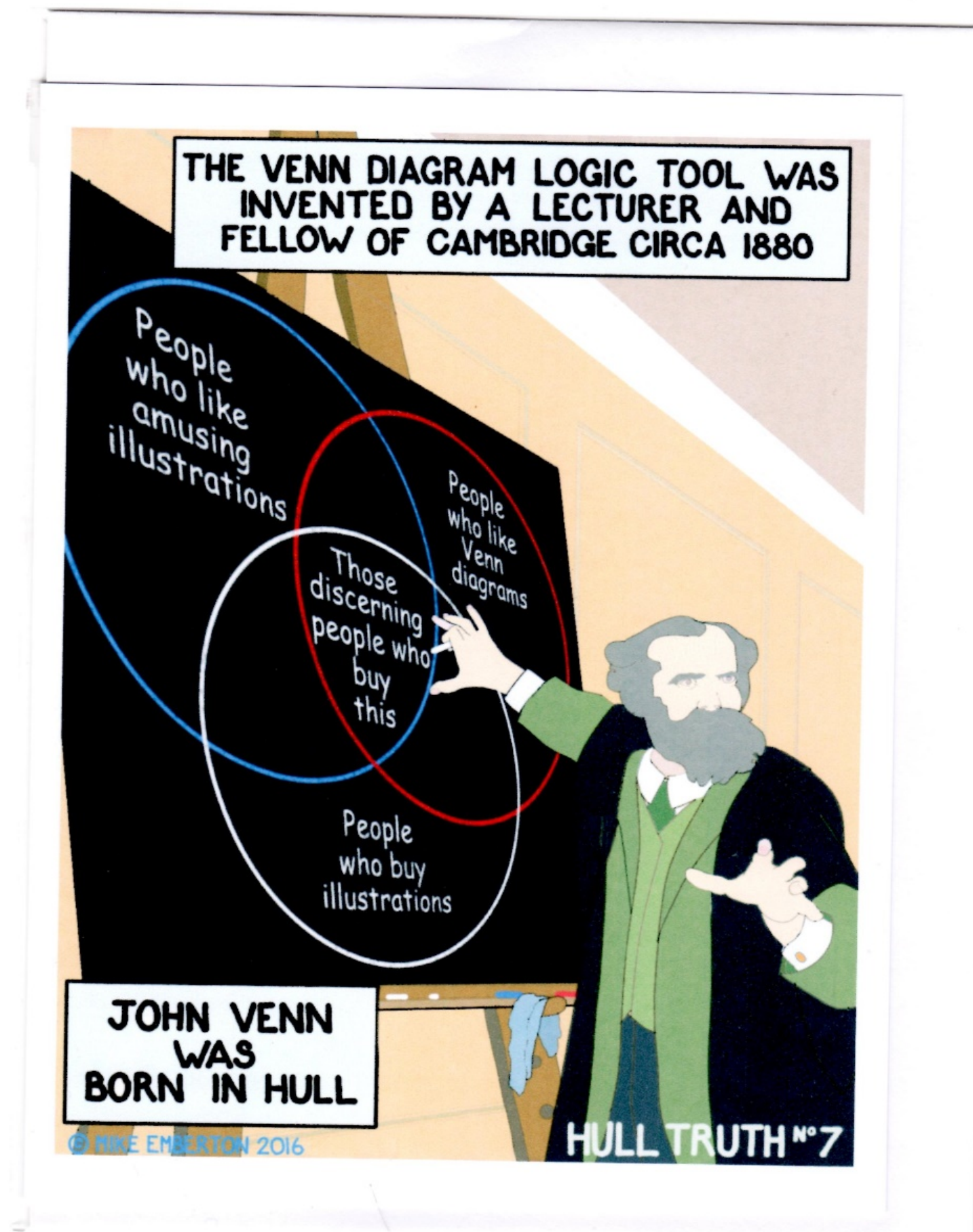


Bursaries for Students from the Hull Area

The JVenn Bursary Platform 2025

Applications: www.jvennfoundation.org/bursaries

Open between March & May 2025



- ❖ **JVenn, named after John Venn, was founded in 2015 - this is our 11th year of providing bursaries**
- ❖ **We have awarded almost 50 bursaries to students from Wilberforce, Wyke, Hull College, Bishop Burton & St Mary's**
- ❖ **Subjects have included nursing, law, sports science, games development, photography, engineering, astrophysics, social work & many others**

Applications: www.jvennfoundation.org/bursaries

Open between March & May 2025

The JVenn Bursary Platform

The platform automatically allows applications to be considered by:

The JVenn Foundation,
Ann Watson's Trust &
Help for Health
(for students studying health-related subjects)

Information in this presentation relates to the application process for all three organisations and for the JVenn interviews & bursaries. The interview processes and actual bursaries provided by Ann Watson and Help for Health will be similar but may differ in the detail - applicants will be informed of exactly how they operate.

So between us we can provide more bursaries

Applications: www.jvennfoundation.org/bursaries

Open between March & May 2025

You can apply if:

- ❖ You live in the Hull area with an HU postcode
- ❖ Your household income is below £30,000 a year
- ❖ You were born after 31st August 2002
- ❖ You're thinking of going to university in 2025

A Bit About The Bursaries

- ❖ The main bursaries are £6,000 each year paid in instalments of £2,000
- ❖ We provide at least six main bursaries between the three organisations
- ❖ Other lower amounts may be awarded so we can help more students
- ❖ We require regular evidence that you are studying
- ❖ The bursaries are only for first degrees, not post-graduate studies

Interviews

- ❖ Each of the three organisations will draw up a short-list to be interviewed
- ❖ Practice between the three organisations differ in the detail & students will be informed of how Ann Watson and Help for Health process applications
- ❖ JVenn interviews will be in June, others maybe a few weeks later
- ❖ We will ask for a reference from the tutor you've nominated
- ❖ At that stage we will also ask for evidence of household income
- ❖ Try to make the date for the face-to-face interview
- ❖ Online doesn't seem to work so well

Applications: www.jvennfoundation.org/bursaries

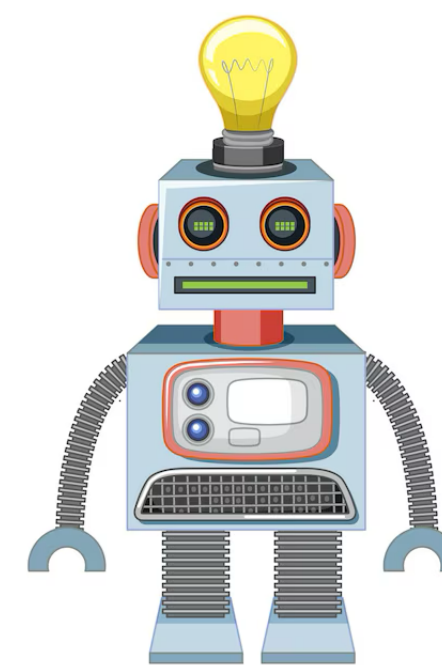
Open between March & May 2025

Guide to Applying

- ❖ This is for you if you'd like to go to university but are worried about money
- ❖ Discuss with your parents or guardian and with one of your tutors
- ❖ Read the instructions on our website
- ❖ Applications can be made only online
- ❖ You can save & print a partially completed application before submitting it

Artificial Intelligence

- ❖ We don't recommend you use AI to complete your application
- ❖ Applications need to be personal and portray the real "you"
- ❖ AI doesn't come to the interview - we're looking for consistency



Not so much!

Applications: www.jvennfoundation.org/bursaries

Open between March & May 2025

How JVenn Selects The Short-List

- ❖ Our four Trustees review each application and make their own “first four” choice and “second four” choice short-lists - a total of eight students for each trustee
- ❖ We meet and compare the lists aiming for an agreed list of eight students who we interview face-to-face
- ❖ Typically, the first four or five are easy to choose but we discuss at length the others on our short-lists till we have a the final list of those we'll interview
- ❖ Three of us do the interviews - usually about 20 minutes each - at an office in Queen's Gardens to select the students who'll get the JVenn bursaries

Online Application Form

The application has the following sections:

- ❖ Personal information
- ❖ Q1: Why have you chosen the course & university you have?
- ❖ Q2: Your future aspirations
- ❖ Q3: Interests outside college
- ❖ Q4: Challenges you've overcome
- ❖ Q5: How the bursary would help you

Applications: www.jvennfoundation.org/bursaries

Open between March & May 2025

Personal Information

- ❖ Name, address, mobile number and email
- ❖ Tutor's name, email & confirmation they are aware you are applying
- ❖ Your first & second choice universities & courses
- ❖ What you are studying now

Q1: Why have you chosen the university and course you have?

- ❖ Is it a subject you've always been interested in, or something you've been especially good at at college or is the next step in your career plans?
- ❖ Have you chosen the university because of its location or maybe because it offers something that specially attracts you?



Q2: Your Future Aspirations



- ❖ Do you have a good idea of what you want to do after uni? Tell us about it
- ❖ Or do you have a number of options?
What are they?
How does the course help you with them?

Applications: www.jvennfoundation.org/bursaries

Open between March & May 2025

Q3: Your Other Interests

- ❖ What do you do when not studying?
- ❖ Tell us about your part-time job
- ❖ Any volunteering?
- ❖ What sports do you play?

It doesn't matter if you are not involved in any of these - we're just trying to build up a rounded picture of you.



Applications: www.jvennfoundation.org/bursaries

Open between March & May 2025

Q4: Overcoming Challenges

Some of you will have faced enormous challenges in your young lives:

Disability, being in care, as a carer, as an immigrant or may be you've suffered some kind of discrimination. This is where you can tell us about that and how you've faced up to it now that you are on the verge of university.

Most of you will have had more straightforward lives but will have faced situations where you had to show resolve. Still tell us about it here.

Applications: www.jvennfoundation.org/bursaries

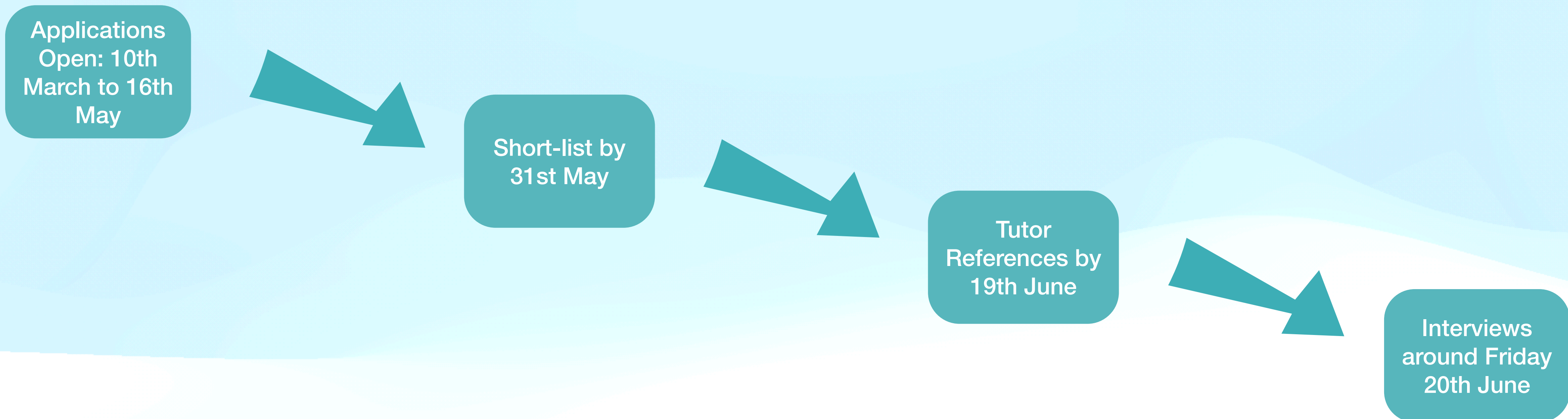
Open between March & May 2025

Q5: How The Bursary Would Help You

- ❖ For us, this is an important question - we want to give the bursaries to those for whom it will make a significant difference to their lives.
- ❖ For some of you, a bursary might help with transport, field trips or IT equipment. For others, it might mean you don't have to work so many hours to earn more money.
- ❖ What is it for you?



Timetable



This is the schedule for JVenn - Ann Watson's and Help for Health will have different timings.

Applications: www.jvennfoundation.org/bursaries

Open between March & May 2025

Any Questions

- ❖ There are several ways you can get help with this:
- ❖ Ask a tutor who might be familiar with our bursaries
- ❖ At Wyke & Wilberforce help is available from the Careers Department
- ❖ Or you can email us at info@jvennfoundation.org